



## Kristalina (60 - 80 mils)

A sparkling, seamless and smooth epoxy floor system designed to shimmer underfoot in commercial settings.



### Decorative:

Available in a range of glittering flake mixes that deliver a sparkling finish.



### Easily Cleaned:

Minimal surface joints ensure the floor is easy to clean and sanitize.



### Wear Resistant:

Excellent scratch and wear resistance to foot and rubber-wheeled cart traffic.



### Stain Resistant:

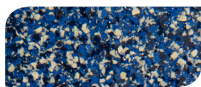
Protects against spillages in grocery stores, tasting rooms and food service areas.



### Lifecycle Cost Efficiencies:

Offers significant lifecycle cost savings compared to tile or vinyl floor finishes.

## Standard Colors:



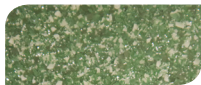
Azure Blue



Cranberry



Ebony



Emerald



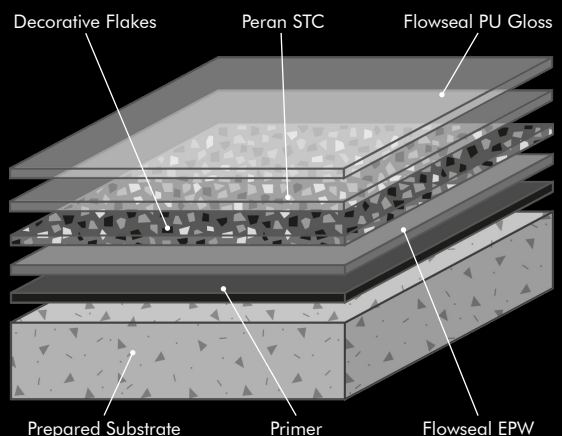
Granite



Pearl

The applied colors may differ from the examples shown. For a full color chart and samples, contact your local Flowcrete office.

<b>COMPRESSIVE STRENGTH:</b>			
ASTM C 579	>8,000 psi		
<b>TENSILE STRENGTH:</b>			
ASTM D 638	>1,450 psi		
<b>FLEXURAL STRENGTH:</b>			
ASTM C 580	>2,175 psi		
<b>SLIP RESISTANCE:</b>			
PTV BS 7976-2 (Using TRRL Rubber Slider)	Dry: 56 Wet: 23*		
<b>ABRASION RESISTANCE:</b>			
ASTM D 4060 CS 17 Wheel, 1000 cycles	0.035g loss		
<b>IMPACT RESISTANCE:</b>			
ISO 6272	2.2 lb weight > 70 inch 4.4 lb weight > 59 inch		
<b>VAPOR PERMEABILITY:</b>			
ASTM E 96	2.5g/m <sup>2</sup> /mm/24 hrs		
<b>BOND STRENGTH:</b>			
Greater than cohesive strength of 3,000 psi concrete, > 220 psi			
<b>TEMPERATURE RESISTANCE:</b>			
Continuous Exposure:	Up to 140°F		
VOC:	12 g/l		
<b>SPEED OF CURE:</b>	<b>50°F</b>	<b>70°F</b>	<b>90°F</b>
Light Traffic	30 hrs	16 hrs	10 hrs
Full Traffic	5 days	72 hrs	36 hrs
Full Chemical Cure	12 days	7 days	4 days



\* With glass beads, Wet 40 minimum.

## Products Included In This System

	2 gal of Flowseal EPW
Unit:	3 gal of Peran STC
	3 gal of Flowseal PU Gloss
Primer:	Flowseal EPW at 200 sq ft/gal
Floor Layer:	Flowseal EPW at 160 sq ft/gal
Flakes:	Kristalina Flakes at 0.25 lbs/sq ft
Sealer:	Peran STC at 140 sq ft/gal
Top Coat:	Flowseal PU Gloss at 300 sq ft/gal

Glass beads can be incorporated to provide better resistance. Coverages listed are theoretical, actual coverages may vary based on substrate, temperature and site variations.

## Installation

Installation should be carried out by a Flowcrete STAR or preferred contractor with a documented quality assurance note. Obtain details of our preferred contractor network from our customer service team or by enquiring through our website. Detailed application instructions are also available upon request.

## Substrate Requirements

Concrete or screed substrate should have a minimum of 3,000 psi compressive strength, free from laitance, dust and other contamination. The substrate should be dry to ASTM requirements and free from excessive moisture vapor transmission.

## Technical Profile

The figures and test results shown overleaf are typical properties achieved in laboratory tests at 75°F and at 50% Relative Humidity.

## Aftercare, Cleaning & Maintenance

Clean regularly using a single or double headed rotary scrubber / drier with a mildly alkaline detergent.

## Environmental Health & Safety

The finished system is assessed as non-hazardous to health and the environment. The long service life and seamless surface reduce the need for repairs and maintenance. Environmental and health considerations are controlled during manufacture and application of the products by Flowcrete Americas' staff and fully trained application teams.

## Warranty

Flowcrete Americas' products are guaranteed against defective materials and manufacture and are sold subject to our standard 'Warranty, Terms and Conditions of Sale', copies of which can be obtained on request. Warranty does not cover suitability, fit for purpose or any consequential or related damages. Please review warranty in detail before installing the products.

## Disclaimer

Any recommendation or suggestion relating to the use of products manufactured by Flowcrete Americas, whether in its technical literature or in response to a specific inquiry, is based upon data believed to be reliable, however the products and information are intended for use by applicators having requisite skill and know-how in the industry and therefore it is for the applicator to satisfy itself of the suitability of the products for its own particular use and it shall be deemed that the applicator has done so at its sole discretion and risk.

[02/02/18]