



## Flowtallics (30 - 35 mils)

A decorative, hard wearing polymer flooring system delivering a unique hand-crafted swirled metallic finish.



### Unique Finish:

Installed by skilled craftsmen to deliver a truly one-of-a-kind floor finish.



### Decorative:

Available in a range of metallic colors with a decorative and eye-catching swirl effect.



### Wear Resistant:

Excellent scratch and wear resistance to foot and rubber-wheeled cart traffic.



### Stain Resistant:

Protects against spillages in grocery stores, tasting rooms and food service areas.



### Easily Cleaned:

Minimal surface joints ensure the floor is easy to clean and sanitize.

## Standard Colors:



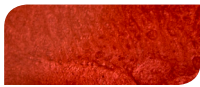
Latte



Sangria



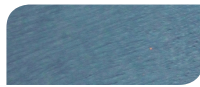
Coffee



Merlot



Mojito



Blue Lagoon



Cosmo



Gray Goose

### COMPRESSIVE STRENGTH:

ASTM C 579	>11,600 psi
------------	-------------

### TENSILE STRENGTH:

ASTM D 638	>1,850 psi
------------	------------

### FLEXURAL STRENGTH:

ASTM C 580	>8,700 psi
------------	------------

### SLIP RESISTANCE:

PTV BS 7976-2 (Using TRRL Rubber Slider)	Dry: 80 Wet: Dependent on specification
---	--

### ABRASION RESISTANCE:

ASTM D 4060 CS 17 Wheel, 1000 cycles	0.080g loss
---	-------------

### SURFACE HARDNESS:

Koenig Hardness Test	>180 secs
----------------------	-----------

### BOND STRENGTH:

Greater than cohesive strength of 3,000 psi concrete, > 220 psi

### TEMPERATURE RESISTANCE:

Continuous Exposure:	Up to 150°F
----------------------	-------------

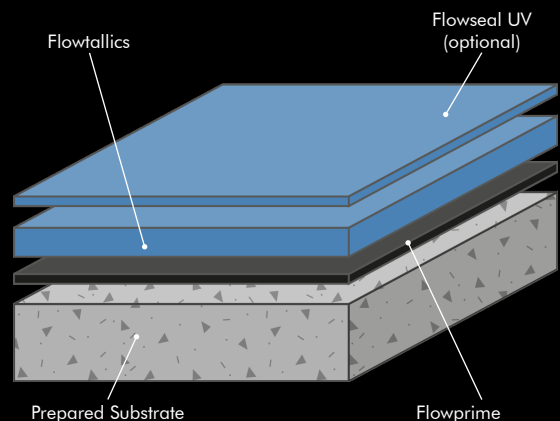
VOC:	12 g/l
------	--------

SPEED OF CURE:	50°F	70°F	90°F
----------------	------	------	------

Light Traffic	30 hrs	16 hrs	10 hrs
---------------	--------	--------	--------

Full Traffic	5 days	72 hrs	36 hrs
--------------	--------	--------	--------

Full Chemical Cure	12 days	7 days	4 days
--------------------	---------	--------	--------



The applied colors may differ from the examples shown. For a full color chart and samples, contact your local Flowcrete office.

## Products Included In This System

Unit:	3 gal including Flowtallics Pigment
Primer:	Flowprime (Black) at 175 - 225 sq ft/gal
Top Coat:	Flowtallics at 60 sq ft/gal
Sealer:	Flowseal UV at 400 sq ft/ gal (optional)

Flowtallics is produced by adding a 12 fl oz unit of Flowtallics pigment to a 3 gallon unit of Protop 1000.

Coverages listed are theoretical, actual coverages may vary based on substrate, temperature and site variations.

## Installation

Installation should be carried out by a Flowcrete STAR or preferred contractor with a documented quality assurance note. Obtain details of our preferred contractor network from our customer service team or by enquiring through our website. Detailed application instructions are also available upon request.

## Substrate Requirements

Concrete or screed substrate should have a minimum of 3,000 psi compressive strength, free from laitance, dust and other contamination. The substrate should be dry to ASTM requirements and free from excessive moisture vapor transmission.

## Technical Profile

The figures and test results shown overleaf are typical properties achieved in laboratory tests at 75°F and at 50% Relative Humidity.

## Aftercare, Cleaning & Maintenance

Clean regularly using a single or double headed rotary scrubber / drier with a mildly alkaline detergent.

## Environmental Health & Safety

The finished system is assessed as non-hazardous to health and the environment. The long service life and seamless surface reduce the need for repairs and maintenance. Environmental and health considerations are controlled during manufacture and application of the products by Flowcrete Americas' staff and fully trained application teams.

## Warranty

Flowcrete Americas' products are guaranteed against defective materials and manufacture and are sold subject to our standard 'Warranty, Terms and Conditions of Sale', copies of which can be obtained on request. Warranty does not cover suitability, fit for purpose or any consequential or related damages. Please review warranty in detail before installing the products.

## Disclaimer

Any recommendation or suggestion relating to the use of products manufactured by Flowcrete Americas, whether in its technical literature or in response to a specific inquiry, is based upon data believed to be reliable, however the products and information are intended for use by applicators having requisite skill and know-how in the industry and therefore it is for the applicator to satisfy itself of the suitability of the products for its own particular use and it shall be deemed that the applicator has done so at its sole discretion and risk.

[02/02/18]