

Flowcrete

for the world at your feet



SYSTEMS SUMMARY

Your Flowcrete Guide to Specialty Polymer Flooring Solutions in any Industry.



Welcome to Flowcrete

Flowcrete is a world leader in the manufacture of seamless polymer floor, wall and coving solutions as well as other specialty coatings for application in both industrial and commercial environments...

We walk on them, we work on them, we drop things on them and we clean them routinely, that's why Flowcrete strives to manufacture flooring materials that offer clients performance characteristics that meet the demands of their daily processes while at the same time look great underfoot, last and deliver a cost-effective lifecycle profile.

Flowcrete is dedicated to innovating sustainable flooring materials and using the earth's natural resources responsibly across all operations to ensure a more positive impact on the construction industry and a greener world at our feet.

Our headquarters in Texas serves expanding business opportunities across the USA, Canada, Latin America and the Caribbean. With key clients including Coca Cola, L'Oréal, Cargill, Nestlé, NASA, GE and Southwest Airlines, Flowcrete remains a dominant force in the polymer flooring market.

Polymer Flooring Chemistries



Cementitious Urethane



Fast Cure MMA



Industrial Resins



Antistatic Flooring



Decorative Resins



Parking Deck Systems



Seamless Terrazzo



Corrosion Protection



Cementitious Floor Grouts



Specialty Products



HACCP International Certified Cementitious Urethane

Flowcrete's HACCP International certified cementitious urethane flooring range, Flowfresh, has been evaluated to international standards and a set of key food safety criteria for potential physical, chemical and microbiological food safety risks by a team of degree qualified food technologists and product assessors.

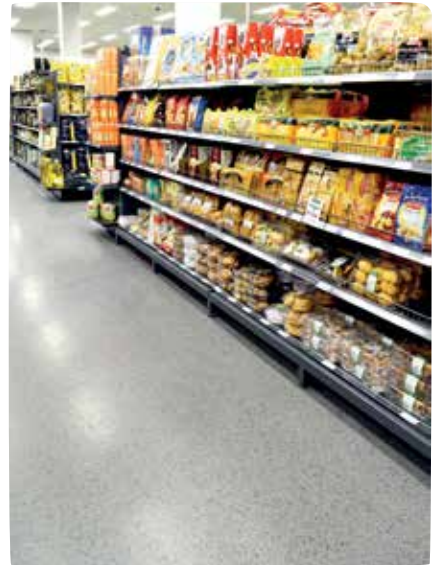
Flowcrete's Flowfresh flooring range has been identified as food-safe for use in wet and dry food handling areas such as kitchens, production areas and processing areas operating a Food Safety Program based on HACCP principles, noting the conditions of the certification statement SSZ.

HACCP International operates a world-renowned product certification scheme for equipment, materials and services used within the global food and beverage processing, production and packaging sector - confirming a product's suitability for use within food businesses that operate to the world's highest standards.

Cementitious Urethane



SYSTEM NAME	THICKNESS	TYPE	DESCRIPTION
Flowfresh SL	1/8" - 3/16"	Slurry broadcast cementitious urethane mortar	A slurry-broadcast, cost effective and HACCP International certified antimicrobial treated cementitious urethane floor system. Flowfresh SL provides an excellent alternative to traditional epoxy floor screeds with enhanced durability and anti-slip properties.
Flowfresh MF	3/16" - 1/4"	Self-leveling cementitious urethane mortar	A self-leveling, HACCP International certified and smooth matte antimicrobial treated cementitious urethane floor system. Flowfresh MF provides a vibrantly colored, easy clean floor finish, which is suited to use in medium duty dry-service zones including packaging areas.
Flowfresh Ultra Flakes	3/16" - 1/4"	Cementitious urethane and polyurea screed	A hybrid flooring system combining antimicrobial treated cementitious urethane with a polyurea finish. Flowfresh Ultra Flakes provides a decorative, colorful and UV-resistant finish with an enhanced speed of cure to ensure a fast return to service.
Flowfresh SR	1/4" - 5/16"	Slurry broadcast cementitious urethane mortar	A decorative, slurry-broadcast and HACCP International certified antimicrobial treated cementitious urethane floor system. Flowfresh SR provides a positively textured and vibrantly colored floor finish, which is resistant to thermal shock and moisture vapor transmission.
Flowfresh SRQ	1/4" - 5/16"	Slurry broadcast cementitious urethane mortar	A slurry-broadcast and HACCP International certified antimicrobial treated cementitious urethane floor system. Flowfresh SRQ provides a positively textured and vibrantly colored floor finish, which is resistant to thermal shock and moisture vapor transmission.
Flowfresh TZ	1/4"	Trowelled cementitious urethane mortar	A trowel-applied, granite filled and HACCP International certified antimicrobial treated cementitious urethane terrazzo system. Flowfresh TZ provides a highly decorative, durable and chemical resistant floor finish, which is resistant to thermal shock and steam cleaning.
Flowfresh HF	1/4" - 3/8"	Trowelled cementitious urethane mortar	A trowel-applied, heavy-duty and HACCP International certified antimicrobial treated cementitious urethane mortar. Flowfresh HF provides a durable, anti-slip finish, which is resistant to thermal shock, steam cleaning and moisture vapor transmission.
Flowfresh RT	1/4" - 3/8"	Rake & trowelled cementitious urethane mortar	A rake & trowel-applied, heavy-duty and HACCP International certified antimicrobial treated cementitious urethane mortar. Flowfresh RT provides a durable, anti-slip finish, which is resistant to thermal shock, steam cleaning and moisture vapor transmission.
Flowfresh IF	3/8" - 1/2"	Trowelled cementitious urethane mortar	An exceptionally heavy duty, trowel applied and HACCP International certified iron filled cementitious urethane mortar. Flowfresh IF provides a durable and finely textured floor finish, which is resistant to heavy impact, thermal shock and moisture vapor transmission.
Flowfresh CM	1/8" - 3/16"	Trowelled cementitious urethane coving mortar	A trowel-applied, chemical resistant and HACCP International certified antimicrobial treated cementitious urethane cove mortar. Flowfresh CM provides a hardwearing cove base, which ensures a seamless, hygienic transition between the floor and wall.



Fast Cure MMA

SYSTEM NAME	THICKNESS	TYPE	DESCRIPTION
Flowfast Flakes	120 mils	MMA resin screed	An eye-catching, wear resistant and fast cure MMA flooring system with a decorative flake finish. Flowfast Flakes consists of vibrant vinyl flakes in clear resin and delivers a fully trafficable surface just 60 minutes from application.
Flowfast DQ	120 mils	MMA resin screed	A slip resistant, decorative and fast cure MMA flooring system for use on pool decks and surrounds. Flowfast DQ consists of durable quartz granules in clear resin and delivers a fully trafficable surface just 60 minutes from application.
Flowfast Quartz	160 mils	MMA resin screed	A robust, wear resistant and fast cure MMA flooring system with a decorative hand broadcast quartz finish. Flowfast Quartz consists of durable quartz in clear resin and delivers a fully trafficable surface just 60 minutes from application.
Flowfast Quartz TR	160 mils	MMA resin screed	A trowel applied, wear resistant and fast cure MMA flooring system with a robust decorative quartz finish. Flowfast Quartz TR consists of durable quartz in clear resin and delivers a fully trafficable surface just 60 minutes from application.
Flowfast Industrial	200 mils	MMA resin screed	A hard wearing, chemical resistant and fast cure MMA flooring system with a matte colored finish. Flowfast Industrial is a thick-set, durable and slip resistant flooring system that delivers a fully trafficable surface just 60 minutes from application.



Industrial Resins

SYSTEM NAME	THICKNESS	TYPE	DESCRIPTION
Flowseal EPW	6 - 8 mils (dry film)	Water-based epoxy floor coating	A vapor permeable, water-dispersed epoxy floor coating system available in a range of neutral shades. Flowseal EPW provides a cost-effective finish that can be installed onto green concrete or alternatively used as a receiving coat for decorative flake aggregates.
Flowcoat ESD	20 - 25 mils	Electrostatic dissipative epoxy coating system	A 100% solids, chemical resistant seamless epoxy floor coating system designed to dissipate electrostatic charge. Flowcoat ESD provides a hardwearing, easily cleaned surface in sensitive electronic manufacturing environments.
Flowcoat SKN	20 - 30 mils	Novolac epoxy floor coating system	A high performance novolac epoxy coating system with an extremely high chemical tolerance profile. Flowcoat SKN offers excellent resistance to chemical exposure and spillage, including battery acid.
Flowcoat HTS	25 mils	Polyurethane floor coating system	A durable polyurethane floor coating system characterized by high abrasion and chemical resistance. Flowcoat HTS is a high-solids, low odor and UV light stable flooring system designed for areas subject to sustained traffic.
Flowcoat WB Satin	25 mils	Epoxy floor coating system	A wear resistant epoxy resin system with a clear, satin finish polyacrylic-aliphatic polyurethane top coat. Flowcoat WB Satin offers high UV stability and wear resistance properties.
Flowcoat SF41	25 - 30 mils	Epoxy floor coating system	A time-proven, cost-effective and wear resistant epoxy floor coating system with adjustable anti-slip properties. Flowcoat SF41 offers high abrasion, slip and chemical resistance properties and is ideal for facilities subject to medium duty processes.
Flowcoat LXP HD	25 - 30 mils	Polyurethane floor coating system	A 100% solids, solvent free and heavy duty polyurethane floor coating system with adjustable anti-slip properties. Flowcoat LXP HD incorporates the use of graded aggregates between coats for added traction and is suited to medium duty environments.



SYSTEM NAME	THICKNESS	TYPE	DESCRIPTION
Flowcoat OP	25 - 30 mils	Epoxy floor coating system	A durable and chemical resistant epoxy floor coating system with a unique and consistent orange-peel finish. Flowcoat OP has been designed to deliver a wear resistant and decorative surface in medium duty environments.
Flowcoat CR	28 - 30 mils	Chemical resistant epoxy floor coating system	A 100% solids, high performance and highly chemical resistant epoxy floor coating system. Flowcoat CR offers enhanced protection against the most common acids, alkalis, caustic soda, salt solutions, oils, fats and sanitizers.
Flowcoat SF41 HCS	35 mils	Epoxy floor coating system	A chemical resistant epoxy floor coating system with adjustable anti-slip properties for use in aircraft hangars. Flowcoat SF41 HCS is resistant to a wide range of aviation fuels including Skydrol.
Flowshield SL	80 mils	Self-leveling epoxy floor coating system	A self-leveling epoxy floor coating system with an attractive, seamless gloss finish. Flowshield SL is designed for use in automotive and aviation settings where high chemical and abrasion resistance are paramount.
Peran STB Broadcast	120 mils	Epoxy floor coating system	A decorative, hard wearing, double broadcast epoxy floor system containing colorful quartz aggregates. Peran STB Broadcast delivers a durable surface suited to wet and dry areas.
Peran STB	1/4"	Trowel applied epoxy floor screed	A decorative, hard wearing epoxy floor mortar containing colorful and durable quartz aggregates. Peran STB delivers a robust surface suited to wet areas.
Flowtex	3/16" - 1/4"	Trowel applied epoxy floor screed	A trowel applied epoxy floor mortar, with excellent durability, abrasion resistance and ease of application. Flowtex offers excellent abrasion, wear, scratch and chemical resistance to deliver a robust surface for use in heavy-duty processing environments.
Flowgard WW	6 - 8 mils	Water based epoxy wall coating	A hygienic, pigmented and vapor permeable water-based epoxy resin coating. Flowgard WW does not support microbial or fungal growth and can be easily wipe cleaned using hot water.

Decorative Resins

SYSTEM NAME	THICKNESS	TYPE	DESCRIPTION
Flowtallics	30 - 35 mils	Polyurea floor coating system	A decorative, hard wearing polymer flooring system delivering a unique hand-crafted swirled metallic finish. Flowtallics is a highly decorative flooring solution that has been developed for use in public settings, subject to heavy levels of foot traffic, looking to impress building users and visitors underfoot.
Flowtallics UV	30 - 35 mils	Polyurea floor coating system	A decorative, hard wearing and UV stable system delivering a unique hand-crafted swirled metallic finish. Flowtallics UV is a highly decorative and UV-stable flooring solution that has been developed for use in public settings subject to heavy levels of foot traffic looking to impress building users and visitors underfoot.
Flowseal Ultra Flakes	30 - 40 mils	Polyurea floor coating system	A decorative resin system containing color stable flakes in a Polyurea binder Flowseal Ultra Flakes is a high performance, attractive flooring solution that can be installed under a fast turnaround to minimize any disruption to trade during renovation works.
Kristalina	60 - 80 mils	Epoxy floor coating system	A sparkling, seamless and smooth epoxy floor system designed to shimmer underfoot in commercial settings. Kristalina is ideally suited to commercial environments with frequent foot traffic, its glittering finish is hard wearing, smooth and seamless for ease of maintenance.
Peran Floor Flakes	60 - 80 mils	Epoxy floor coating system	A seamless, glossy and chemical resistant decorative flooring system available in a range of flake finishes. Peran Floor Flakes is suited to use in retail outlets as well as restaurants, schools and hospitals where it combines strength and wear resistance with an eye-catching finish.
Flowshield Quartz	1/8"	Epoxy floor coating system	A high-build, self-leveling and pigmented epoxy floor system with a decorative, hygienic quartz bead finish. Flowshield Quartz is suited to environments that experience medium to high levels of traffic and aggressive cleaning regimes.
Rustik Natural Stone	5/16" - 1/2"	Resin bound stone carpet (internal)	A decorative stone carpet system containing natural stone aggregates. Rustik Natural Stone offers an attractive, slip resistant floor finish that is well suited to use in car showrooms, high end retail boutiques and lobby areas.





Parking Deck Systems

SYSTEM NAME	THICKNESS	TYPE	DESCRIPTION
Deckshield ID	40 mils	Polyurethane deck coating system (internal)	A flexible polyurethane deck coating system for use on intermediate decks of multi-story parking structures. Deckshield ID cosmetically enhances multi-story parking environments and ensures safety underfoot with enhanced traction.
Deckshield Rapide ID	60 mils	MMA deck coating system (internal)	A fast cure MMA deck coating system for use on intermediate decks of multi-story parking structures. Deckshield Rapide ID ensures quick and speedy install over large areas in order to minimize any operational downtime to the structure.
Deckshield Rapide ED	100 mils	MMA deck coating system (external)	A fast cure MMA deck coating system for use on external or exposed decks of multi-story parking structures. Deckshield Rapide ED ensures quick and speedy install over large areas in order to minimize any operational downtime to the structure.



Seamless Terrazzo

SYSTEM NAME	THICKNESS	TYPE	DESCRIPTION
Mondéco Classic	1/3"	Epoxy terrazzo	A seamless, decorative and durable epoxy resin terrazzo containing a blend of marble aggregates. Mondéco Classic provides a decorative floor surface in commercial environments prioritizing aesthetics, wear resistance and durability.
Mondéco Crystal	1/3"	Epoxy terrazzo	A seamless, decorative and durable epoxy resin terrazzo containing a blend of clear and mirror glass aggregates. Mondéco Crystal provides a stunning floor surface in commercial environments prioritizing aesthetics, wear resistance and durability.
Mondéco Exotic	1/3"	Epoxy terrazzo	A seamless epoxy resin terrazzo containing a blend of mother of pearl, marble and mirror glass aggregates. Mondéco Exotic provides a colorful floor surface in commercial environments prioritizing aesthetics, wear resistance and durability.
Mondéco Earth	1/3"	Epoxy terrazzo	A seamless, decorative and heavy duty epoxy resin terrazzo containing durable flint aggregates. Mondéco Earth provides an easily cleaned, chemical resistant and durable floor finish suited to use in pharmaceutical production and process facilities.
Mondéco TZ	1/4"	Cementitious urethane terrazzo	A trowel-applied, granite filled antimicrobial treated cementitious urethane terrazzo flooring system. Mondéco TZ contains granite within a cementitious urethane binder, providing a smooth finish suited to use in pharmaceutical production and process facilities.

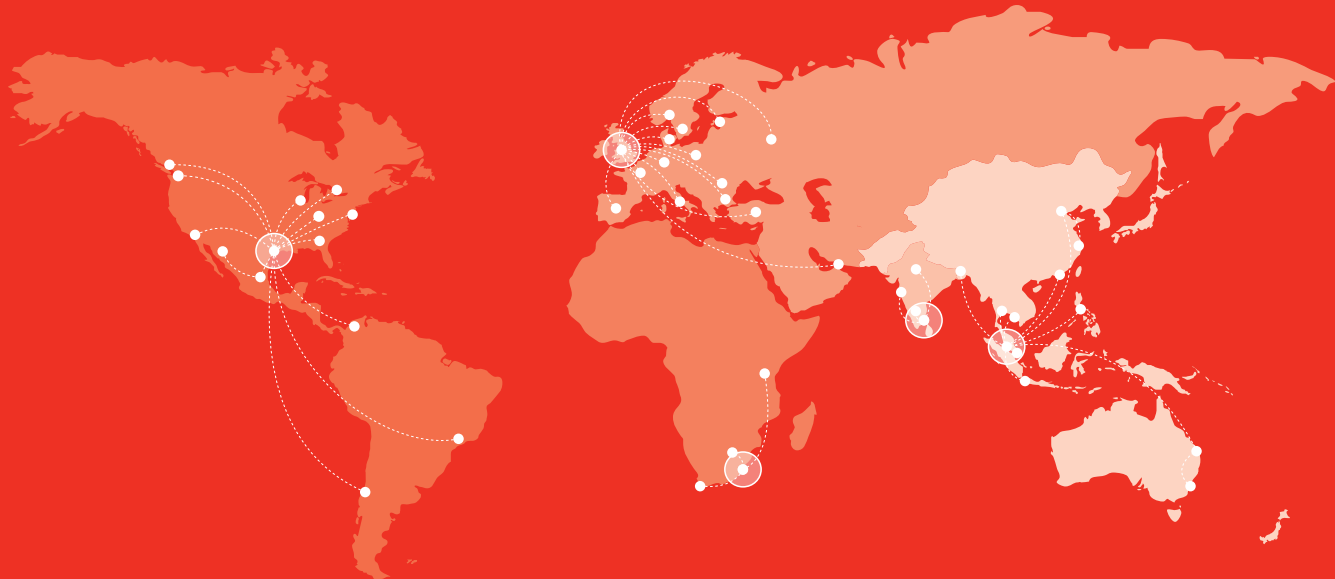


Corrosion Protection Systems

SYSTEM NAME	THICKNESS	TYPE	DESCRIPTION
Flowchem VE RC	40 mils	Vinyl ester elastomer modified epoxy resin	A horizontal and vertical roller applied vinyl ester coating with excellent chemical resistance. Flowchem VE RC offers anti-corrosion protection for concrete walls, floors, curbs, equipment bases, trenches and drains.
Flowchem VE BC	60, 75 & 125 mils	Vinyl ester elastomer modified epoxy resin	A horizontal and vertical applied vinyl ester coating containing broadcast aggregates. Flowchem VE BC offers hardwearing anti-corrosion protection for concrete walls, floors, curbs, equipment bases, trenches and drains.
Flowchem VE GL	125 mils	Glass lined vinyl ester elastomer modified epoxy resin	A glassfibre reinforced horizontal and vertical applied vinyl ester coating with excellent chemical resistance. Flowchem VE GL offers anti-corrosion protection for concrete and metal structures subject to continuous exposure of aggressive chemicals.

Cementitious Floor Grouts

SYSTEM NAME	THICKNESS	TYPE	DESCRIPTION
Isocrete 1500	>3/16"	Cementitious floor grout	A polymer-modified, cementitious, single component surfacing compound designed for use on new or worn concrete substrates. Isocrete 1500 has been designed to provide a fast drying underlayment, for easy levelling of concrete floors before the installation of floor coverings, e.g. vinyl, carpets, ceramic tiles, wood block, linoleum or cork.
Flowscreed Industrial Top	>3/16"	Cementitious floor grout	A hardwearing, heavy duty polymer-modified, cementitious surfacing compound. Flowscreed Industrial Top has been designed to provide a fast track renovation of floors in warehouses, production zones, aircraft hangers, automotive process lines and other areas where a hardwearing level floor is needed.
Isocrete 4000	1/4" - 4"	Cementitious floor grout	A trowel-applied, fast cure and high performance cement base for sloping and patching floors. Isocrete 4000 has been designed to repair, slope or level structurally sound, interior and exterior concrete surfaces that are pitted, worn, scaled or spalled.



Flowcrete

Flowcrete is the world's leading manufacturer of seamless resin floor, wall and coving solutions as well as a range of other specialist coating technologies with operations across the globe.

Europe & Middle East

Baltic States	+48 883 303 880	latvia@flowcrete.com
Bulgaria	+359 898 61 58 31	bulgaria@flowcrete.com
Denmark	+46 435 40 01 10	denmark@flowcrete.com
France	+33 1 60 61 74 42	france@flowcrete.com
Germany	+49 4187 50 29 470	germany@flowcrete.com
Italy	+39 339 4853258	italy@flowcrete.com
Norway	+47 64 86 08 30	norway@flowcrete.com
Poland	+48 22 879 89 07	poland@flowcrete.com
Romania	+40 766 596 991	romania@flowcrete.com
Russia	+7 495 645 83 18	rus@flowcrete.com
Spain	+34 937 07 0872	spain@flowcrete.com
Sweden	+46 435 40 01 10	sweden@flowcrete.com
Turkey	+90 532 416 66 52	turkey@flowcrete.com
UAE	+971 4 886 4728	uae@flowcrete.com
UK	+44 1270 753 000	uk@flowcrete.com

Africa

East Africa	+254 20 682 1011	eastafrika@flowcrete.com
South Africa	+27 31 461 3411	southafrica@flowcrete.com

India

India	+91 44 4202 9831	india@flowcrete.com
-------	------------------	---------------------

Asia Pacific

Australia	+61 7 3205 7115	australia@flowcrete.com
Bangladesh	+88 02 9857222	bangladesh@flowcrete.com
China	+86 10 8472 1912	china@flowcrete.com
Hong Kong	+852 2795 0478	hongkong@flowcrete.com
Indonesia	+62 21 252 3201	indonesia@flowcrete.com
Malaysia	+60 3 6277 9575	malaysia@flowcrete.com
Philippines	+63 917 514 2696	philippines@flowcrete.com
Singapore	+65 6848 7166	singapore@flowcrete.com
Thailand	+66 2539 3424	thailand@flowcrete.com
Vietnam	+84 8 6287 0846	vietnam@flowcrete.com

North & South America

Manufactured by Key Resin Company	+1 936 539 6700	sales@keyresin.com
-----------------------------------	-----------------	--------------------

*Whilst every care has been taken to ensure that the information included in this document was accurate at the time of printing, Flowcrete reserves the right to change product specifications at any time without prior notice. The photographs and colours reproduced in this publication are within the constraints of the printing process and are not to be used for matching purposes. All photographs are used for approximate representation only and may not show the actual products on offer. E&OE.