

Flowcrete

for the world at your feet



COMMERCIAL FLOORING

High Performance Decorative Resin Flooring for:

- ✓ Retail Spaces
- ✓ Transportation
- ✓ Event Centers
- ✓ Healthcare & Labs
- ✓ Education
- ✓ Leisure Venues



Welcome to Flowcrete

Flowcrete is a world leader in the manufacture of seamless resin flooring systems for application in both industrial and commercial environments.

Flowcrete has a fresh approach to flooring and is constantly looking to introduce world-class systems, which offer clients a number of performance advantages while at the same time make floors much more than a surface to walk on.

Flowcrete is dedicated to innovating sustainable flooring materials and using the earth's natural resources responsibly across all operations to ensure a more positive impact on the construction industry and a greener world at our feet.

Flowcrete in North and South America is manufactured by Key Resin Company in Batavia, Ohio. Together serving expanding business opportunities across the continent including the USA, Canada, Latin America and the Caribbean. With clients including Coca Cola, L'Oreal, Cargil, Nestle, NASA, GE and Southwest Airlines, Flowcrete continues to develop a significant presence in the Americas' polymer flooring market.

Introduction to Flowcrete's Commercial Flooring



Offering attractive, eye-catching surfaces for public venues without compromising the performance benefits of traditional polymer flooring.

Available in a range of smooth and flaked finishes, these seamless solutions can be installed in complicated and intricate patterns, manufactured in virtually any color way or using a hand-picked quartz aggregate or flake blend to create stunning surfaces that won't go unnoticed.

Durable formulations take heavy foot traffic and exposure to detergents, sanitizers and cleaning agents in their stride. Plus, the excellent slip resistance properties of resin systems reduces slips and falls to ensure safety underfoot.

Performance Benefits

✓	Attractive finishes to enhance your environment
✓	Custom colors available
✓	Exceptional chemical resistance*
✓	Impressive abrasion resistance for a longer lifespan
✓	Impact resistant, withstanding heavy pedestrian traffic
✓	Seamless finishes for low, easy maintenance

* A detailed chemical resistance chart is available upon request for all Commercial systems. Please contact your local Technical Department for further assistance.

Application Suitability



Retail Stores



Transportation



Event Centers



Healthcare Environments



Education



Leisure Venues



Peran STB Broadcast (120 mils)

A decorative, hard wearing, double broadcast epoxy floor system containing colorful quartz aggregates.



Chemical Resistant:

Protects against a range of acids, alkalis, solvents, alcohol, sanitizers and fuel.



Wear Resistant:

Excellent abrasion, impact and wear resistance in high traffic areas.



Decorative:

Available in a range of vibrant high gloss colors and finishes.



Slip Resistant:

Adjustable, positively textured profile to minimize slip risks in wet or damp areas.



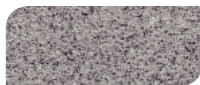
Seamless & Easily Cleaned:

Seamless installation ensures dirt and dust are swiftly and easily cleaned away.

Standard Colors:



Spring Glen



Gray Mist



Rococo



Blueberry Ice



Kitchen Red

COMPRESSIVE STRENGTH:

ASTM C 579	>10,500 psi
------------	-------------

TENSILE STRENGTH:

ASTM D 638	>1,450 psi
------------	------------

FLEXURAL STRENGTH:

ASTM C 580	>2,175 psi
------------	------------

SLIP RESISTANCE:

PTV BS 7976-2 (Using TRRL Rubber Slider)	Dry: 60 Wet: Dependent on specification
---	--

ABRASION RESISTANCE:

ASTM D 4060 CS 17 Wheel, 1000 cycles	0.070g loss
---	-------------

SURFACE HARDNESS:

Koenig Hardness Test	>180 secs
----------------------	-----------

BOND STRENGTH:

Greater than cohesive strength of 3,000 psi concrete, > 220 psi

TEMPERATURE RESISTANCE:

Continuous Exposure:	Up to 140°F
----------------------	-------------

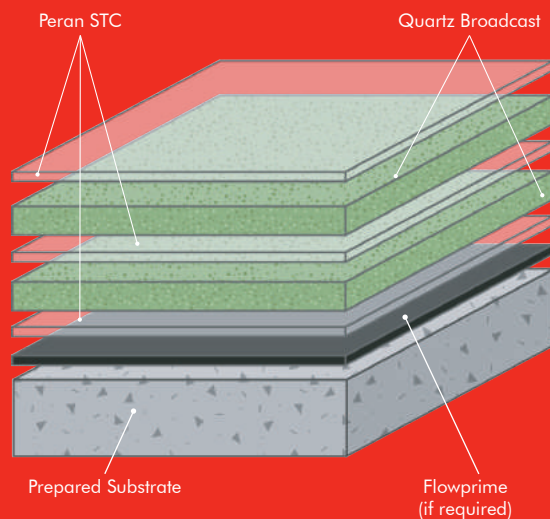
VOC (FLOWCOAT SF41):	12 g/l
----------------------	--------

SPEED OF CURE:	50°F	70°F	90°F
----------------	------	------	------

Light Traffic	30 hrs	16 hrs	8 hrs
---------------	--------	--------	-------

Full Traffic	96 hrs	48 hrs	36 hrs
--------------	--------	--------	--------

Full Chemical Cure	12 days	7 days	3 days
--------------------	---------	--------	--------



The applied colors may differ from the examples shown. For a full color chart and samples, contact your local Flowcrete office.



Peran Floor Flakes (60 - 80 mils)

A seamless, glossy and chemical resistant decorative flooring system available in a range of flake finishes.



Decorative:

Available in vibrant flake color mixes that can be matched to neighboring interiors.



Easily Cleaned:

Minimal surface joints ensure the floor is easy to clean and sanitize.



Wear Resistant:

Excellent scratch and wear resistance to foot and rubber-wheeled cart traffic.



Stain Resistant:

Protects against spillages in grocery stores, tasting rooms and food service areas.



Chemical Resistant:

Protects against acids, alkalis, caustic soda, salt solutions, oils, fats and sanitizers.

Standard Colors:



Scarlet



Cobblestone



Quicksilver



Domino



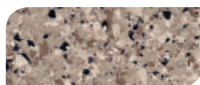
Ice Blue



Midnight



Green Bay



Desert Tan

The applied colors may differ from the examples shown.
For a full color chart and samples, contact your local Flowcrete office.

COMPRESSIVE STRENGTH:

ASTM C 579 >8,000 psi

TENSILE STRENGTH:

ASTM D 638 >1,450 psi

FLEXURAL STRENGTH:

ASTM C 580 >2,175 psi

SLIP RESISTANCE:

PTV BS 7976-2
(Using TRRL Rubber Slider)
Dry: 56
Wet: 23

ABRASION RESISTANCE:

ASTM D 4060
CS 17 Wheel, 1000 cycles 0.035g loss

IMPACT RESISTANCE:

ISO 6272
2.2 lb weight > 70 inch
4.4 lb weight > 59 inch

VAPOR PERMEABILITY:

ASTM E 96 2.5g/m²/mm/24 hrs

BOND STRENGTH:

Greater than cohesive strength of 3,000 psi concrete,
> 220 psi

TEMPERATURE RESISTANCE:

Continuous Exposure: Up to 140°F

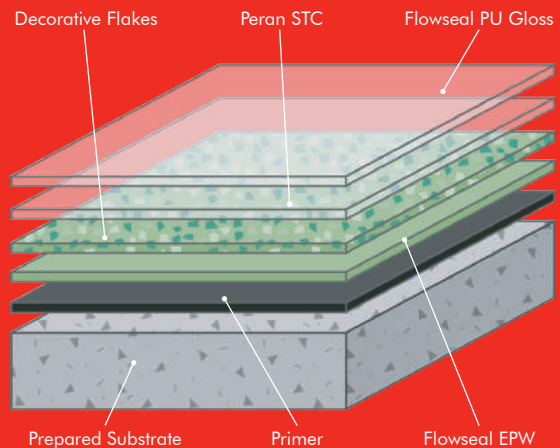
VOC: 12 g/l

SPEED OF CURE: 50°F 70°F 90°F

Light Traffic 30 hrs 16 hrs 10 hrs

Full Traffic 5 days 72 hrs 36 hrs

Full Chemical Cure 12 days 7 days 4 days





Application Suitability

Retail Stores	✓
Transportation	✓
Event Centers	✓
Healthcare & Labs	✓
Education Environments	✓
Leisure Venues	✓



Kristalina (60 - 80 mils)

A sparkling, seamless and smooth epoxy floor system designed to shimmer underfoot in commercial settings.



Decorative:

Available in a range of glittering flake mixes that deliver a sparkling finish.



Easily Cleaned:

Minimal surface joints ensure the floor is easy to clean and sanitize.



Wear Resistant:

Excellent scratch and wear resistance to foot and rubber-wheeled cart traffic.



Stain Resistant:

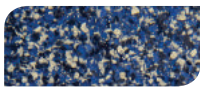
Protects against spillages in grocery stores, tasting rooms and food service areas.



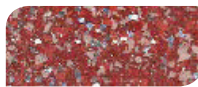
Lifecycle Cost Efficiencies:

Offers significant lifecycle cost savings compared to tile or vinyl floor finishes.

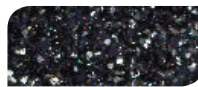
Standard Colors:



Azure Blue



Cranberry



Ebony



Emerald



Granite



Pearl

COMPRESSIVE STRENGTH:

ASTM C 579	>8,000 psi
------------	------------

TENSILE STRENGTH:

ASTM D 638	>1,450 psi
------------	------------

FLEXURAL STRENGTH:

ASTM C 580	>2,175 psi
------------	------------

SLIP RESISTANCE:

PTV BS 7976-2 (Using TRRL Rubber Slider)	Dry: 56 Wet: 23*
---	---------------------

ABRASION RESISTANCE:

ASTM D 4060 CS 17 Wheel, 1000 cycles	0.035g loss
---	-------------

IMPACT RESISTANCE:

ISO 6272	2.2 lb weight > 70 inch 4.4 lb weight > 59 inch
----------	--

VAPOR PERMEABILITY:

ASTM E 96	2.5g/m ² /mm/24 hrs
-----------	--------------------------------

BOND STRENGTH:

Greater than cohesive strength of 3,000 psi concrete, > 220 psi

TEMPERATURE RESISTANCE:

Continuous Exposure:	Up to 140°F
----------------------	-------------

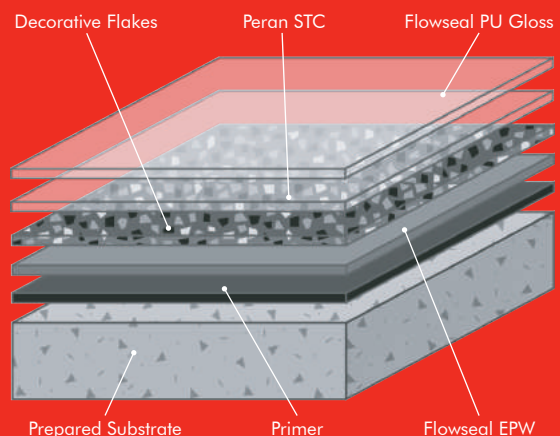
VOC:	12 g/l
------	--------

SPEED OF CURE:	50°F	70°F	90°F
----------------	------	------	------

Light Traffic	30 hrs	16 hrs	10 hrs
---------------	--------	--------	--------

Full Traffic	5 days	72 hrs	36 hrs
--------------	--------	--------	--------

Full Chemical Cure	12 days	7 days	4 days
--------------------	---------	--------	--------



* With glass beads, Wet 40 minimum.

The applied colors may differ from the examples shown.
For a full color chart and samples, contact your local Flowcrete office.

flowcreteamericas.com



Flowseal Ultra Flakes (30 - 40 mils)

A decorative resin system containing color stable flakes in a Polyurea binder.



Decorative:

Available in vibrant flake color mixes that can be matched to neighboring interiors.



Easily Cleaned:

Minimal surface joints ensure the floor is easy to clean and sanitize.



Wear Resistant:

Excellent scratch and wear resistance to foot and rubber-wheeled cart traffic.



Stain Resistant:

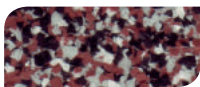
Protects against spillages in grocery stores, tasting rooms and food service areas.



Chemical Resistant:

Protects against acids, alkalis, caustic soda, salt solutions, oils, fats and sanitizers.

Standard Colors:



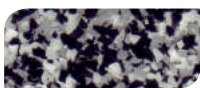
Scarlet



Cobblestone



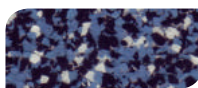
Quicksilver



Domino



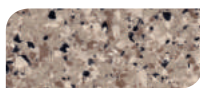
Ice Blue



Midnight



Green Bay



Desert Tan

The applied colors may differ from the examples shown.
For a full color chart and samples, contact your local Flowcrete office.

TENSILE STRENGTH:

ASTM D 638	> 1,250 psi
------------	-------------

TENSILE ELONGATION:

ASTM D 638	25%
------------	-----

SLIP RESISTANCE:

PTV BS 7976-2 (Using TRRL Rubber Slider)	Dry: 56 Wet: 23
---	--------------------

ABRASION RESISTANCE:

ASTM D 4060 CS 17 Wheel, 1000 cycles	0.040g loss
---	-------------

SURFACE HARDNESS:

Koenig Hardness Test	> 180 secs
----------------------	------------

IMPACT RESISTANCE:

ISO 6272	2.2 lb weight > 70 inch 4.4 lb weight > 59 inch
----------	--

WATER ABSORPTION:

ASTM D 570	0.0008%
------------	---------

BOND STRENGTH:

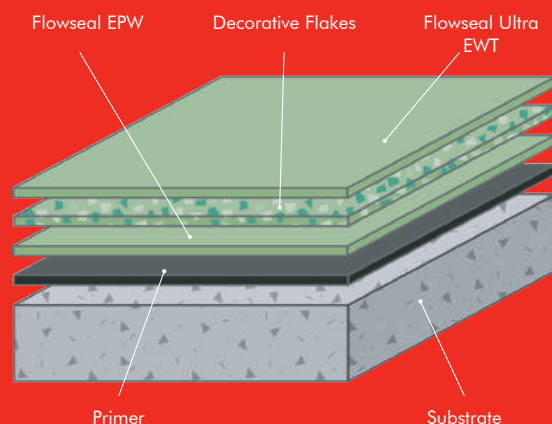
Greater than cohesive strength of 3,000 psi concrete,
> 220 psi

TEMPERATURE RESISTANCE:

Continuous Exposure:	Up to 165°F
----------------------	-------------

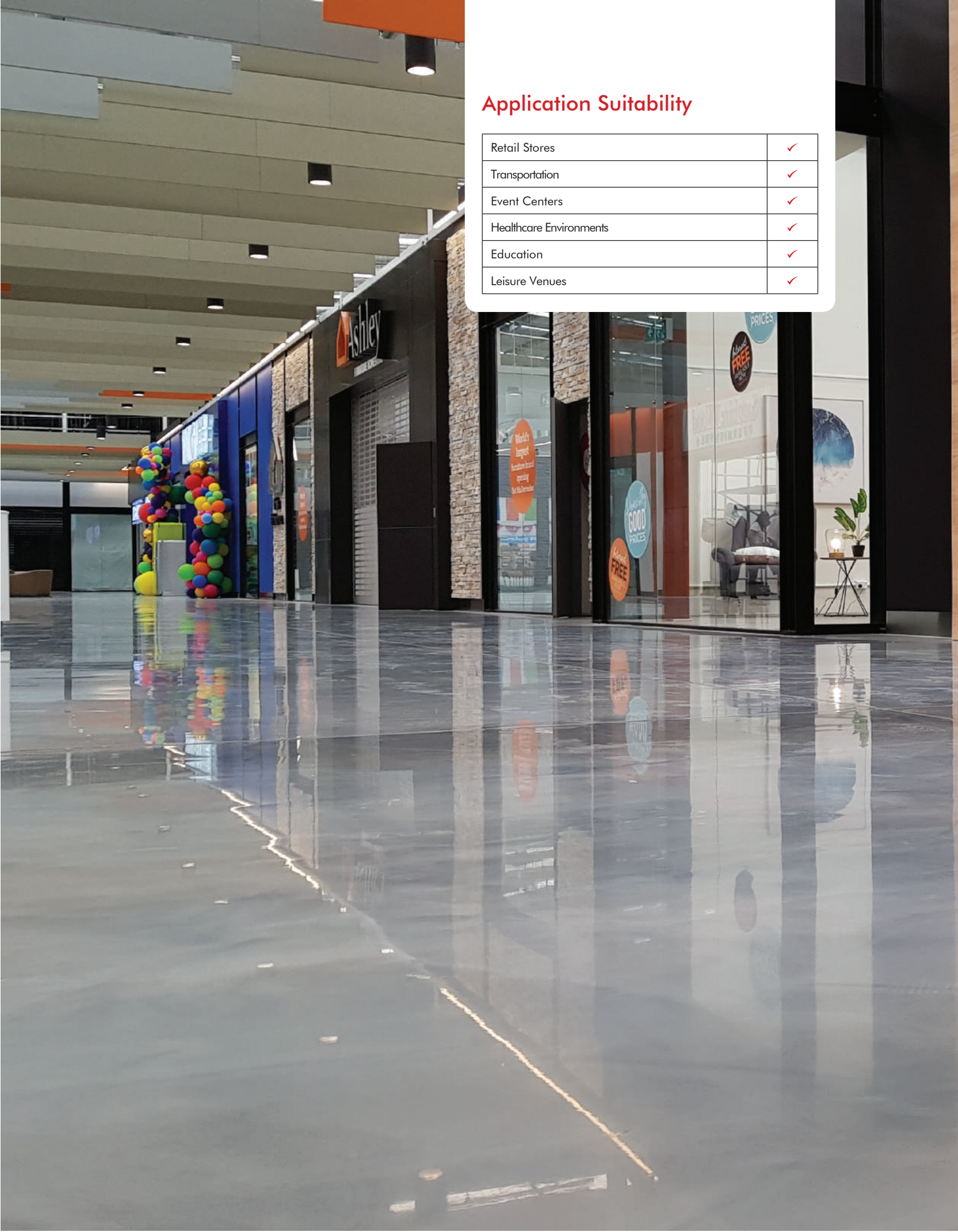
VOC:	12 g/l
------	--------

SPEED OF CURE:	50°F	70°F	90°F
Light Traffic	8 hrs	4 hrs	2 hrs
Full Traffic	48 hrs	24 hrs	12 hrs
Full Chemical Cure	6 days	3 days	2 days



Application Suitability

Retail Stores	✓
Transportation	✓
Event Centers	✓
Healthcare Environments	✓
Education	✓
Leisure Venues	✓





Flowtallics (30 - 35 mils)

A decorative, hard wearing polymer flooring system delivering a unique hand-crafted swirled metallic finish.



Unique Finish:

Installed by skilled craftsmen to deliver a truly one-of-a-kind floor finish.



Decorative:

Available in a range of metallic colors with a decorative and eye-catching swirl effect.



Wear Resistant:

Excellent scratch and wear resistance to foot and rubber-wheeled cart traffic.



Stain Resistant:

Protects against spillages in grocery stores, tasting rooms and food service areas.



Easily Cleaned:

Minimal surface joints ensure the floor is easy to clean and sanitize.

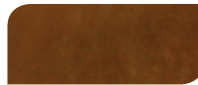
Standard Colors:



Latte



Sangria



Coffee



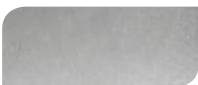
Merlot



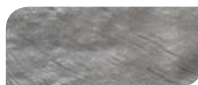
Mojito



Blue Lagoon



Cosmo



Gray Goose

The applied colors may differ from the examples shown.
For a full color chart and samples, contact your local Flowcrete office.

COMPRESSIVE STRENGTH:

ASTM C 579	>11,600 psi
------------	-------------

TENSILE STRENGTH:

ASTM D 638	>1,850 psi
------------	------------

FLEXURAL STRENGTH:

ASTM C 580	>8,700 psi
------------	------------

SLIP RESISTANCE:

PTV BS 7976-2 (Using TRRL Rubber Slider)	Dry: 80 Wet: Dependent on specification
---	--

ABRASION RESISTANCE:

ASTM D 4060 CS 17 Wheel, 1000 cycles	0.080g loss
---	-------------

SURFACE HARDNESS:

Koenig Hardness Test	>180 secs
----------------------	-----------

BOND STRENGTH:

Greater than cohesive strength of 3,000 psi concrete,
> 220 psi

TEMPERATURE RESISTANCE:

Continuous Exposure:	Up to 150°F
----------------------	-------------

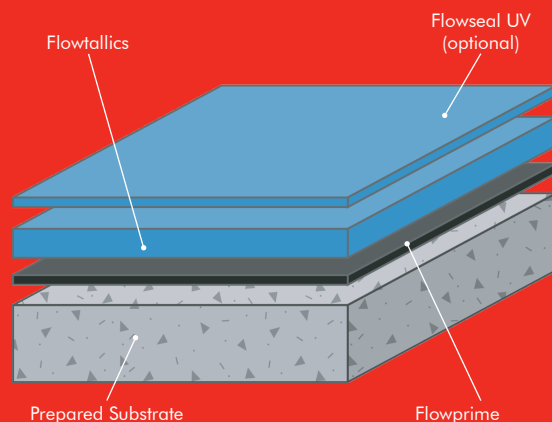
VOC:	12 g/l
------	--------

SPEED OF CURE:	50°F	70°F	90°F
----------------	------	------	------

Light Traffic	30 hrs	16 hrs	10 hrs
---------------	--------	--------	--------

Full Traffic	5 days	72 hrs	36 hrs
--------------	--------	--------	--------

Full Chemical Cure	12 days	7 days	4 days
--------------------	---------	--------	--------





Flowtallics UV (30 - 35 mils)

A decorative, hard wearing and UV stable system delivering a unique hand-crafted swirled metallic finish.



Unique Finish:

Installed by skilled craftsmen to deliver a truly one-of-a-kind floor finish.



Decorative:

Available in a range of metallic colors with a decorative and eye-catching swirl effect.



Wear Resistant:

Excellent scratch and wear resistance to foot and rubber-wheeled cart traffic.



Stain Resistant:

Protects against spillages in grocery stores, tasting rooms and food service areas.



UV Resistant:

100% UV stable formulation available. Prevents the floor from yellowing.

Standard Colors:



Latte



Sangria



Coffee



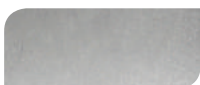
Merlot



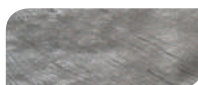
Mojito



Blue Lagoon



Cosmo



Gray Goose

COMPRESSIVE STRENGTH:

ASTM C 579	>5,000 psi
------------	------------

TENSILE STRENGTH:

ASTM D 638	>2,200 psi
------------	------------

FLEXURAL STRENGTH:

ASTM C 580	>4,500 psi
------------	------------

SLIP RESISTANCE:

PTV BS 7976-2 (Using TRRL Rubber Slider)	Dry: 80 Wet: Dependent on specification
---	--

ABRASION RESISTANCE:

ASTM D 4060 CS 17 Wheel, 1000 cycles	0.040g loss
---	-------------

SURFACE HARDNESS:

Koenig Hardness Test	>180 secs
----------------------	-----------

BOND STRENGTH:

Greater than cohesive strength of 3,000 psi concrete, > 220 psi

TEMPERATURE RESISTANCE:

Continuous Exposure:	Up to 165°F
----------------------	-------------

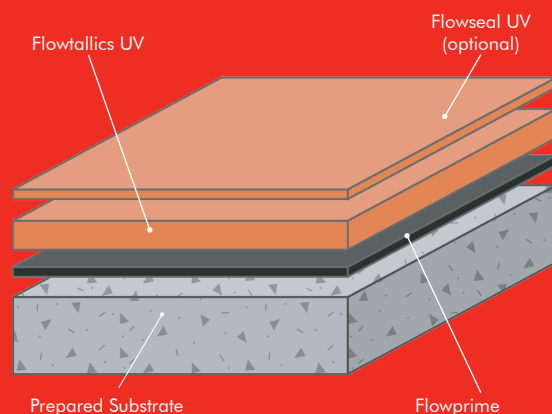
VOC:	10 g/l
------	--------

SPEED OF CURE:	50°F	70°F	90°F
----------------	------	------	------

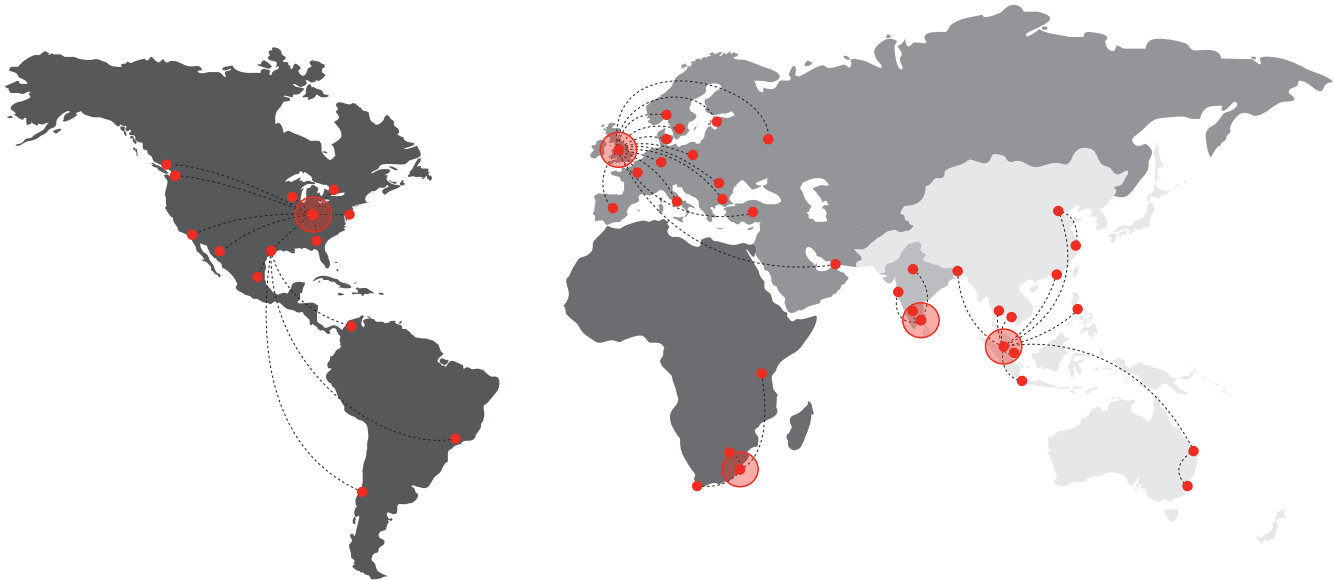
Light Traffic	8 hrs	4 hrs	2 hrs
---------------	-------	-------	-------

Full Traffic	48 hrs	24 hrs	12 hrs
--------------	--------	--------	--------

Full Chemical Cure	6 days	3 days	2 days
--------------------	--------	--------	--------



The applied colors may differ from the examples shown. For a full color chart and samples, contact your local Flowcrete office.



Flowcrete

Flowcrete is the world's leading manufacturer of seamless resin floor, wall and coving solutions as well as a range of other specialist coating technologies with operations across the globe.

Europe & Middle East

Baltic States	+48 883 303 880	latvia@flowcrete.com
Bulgaria	+359 898 61 58 31	bulgaria@flowcrete.com
Denmark	+46 435 40 01 10	denmark@flowcrete.com
France	+33 1 60 61 74 42	france@flowcrete.com
Germany	+49 6119 016645	germany@flowcrete.com
Italy	+39 339 4853258	italy@flowcrete.com
Norway	+47 64 86 08 30	norway@flowcrete.com
Poland	+48 22 879 89 07	poland@flowcrete.com
Romania	+40 766 596 991	romania@flowcrete.com
Russia	+7 495 645 83 18	rus@flowcrete.com
Spain	+34 937 07 0872	spain@flowcrete.com
Sweden	+46 435 40 01 10	sweden@flowcrete.com
Turkey	+90 532 416 66 52	turkey@flowcrete.com
UAE	+971 4 886 4728	uae@flowcrete.com
UK	+44 1270 753 000	uk@flowcrete.com

Africa

East Africa	+254 20 682 1011	eastafrika@flowcrete.com
South Africa	+27 31 461 3411	southafrika@flowcrete.com

India

India	+91 44 4202 9831	india@flowcrete.com
-------	------------------	---------------------

Asia Pacific

Australia	+61 7 3205 7115	australia@flowcrete.com
Bangladesh	+88 02 9857222	bangladesh@flowcrete.com
China	+86 10 8472 1912	china@flowcrete.com
Hong Kong	+852 2795 0478	hongkong@flowcrete.com
Indonesia	+62 21 252 3201	indonesia@flowcrete.com
Malaysia	+60 3 6277 9575	malaysia@flowcrete.com
Philippines	+63 917 514 2696	philippines@flowcrete.com
Singapore	+65 6848 7166	singapore@flowcrete.com
Thailand	+66 2539 3424	thailand@flowcrete.com
Vietnam	+84 8 6287 0846	vietnam@flowcrete.com

North & South America

Manufactured by Key Resin Company	+1 936 539 6700	sales@keyresin.com
-----------------------------------	-----------------	--------------------

*Whilst every care has been taken to ensure that the information included in this document was accurate at the time of printing, Flowcrete reserves the right to change product specifications at any time without prior notice. The photographs and colours reproduced in this publication are within the constraints of the printing process and are not to be used for matching purposes. All photographs are used for approximate representation only and may not show the actual products on offer. E&OE.